

Jakarta's Urban Villages:

A Community Based Approach to Urban Mobility



Institute for Transportation
& Development Policy

April 23, 2019

Deliani Poetriayu Siregar

Outlines

- **Kampung Kota?**
- **“Kampung Kota Bersama”**
- **Methods & Replication Progress**
- **Potential Collaborations**

Kampung Kota?

The definition of Kampung Kota

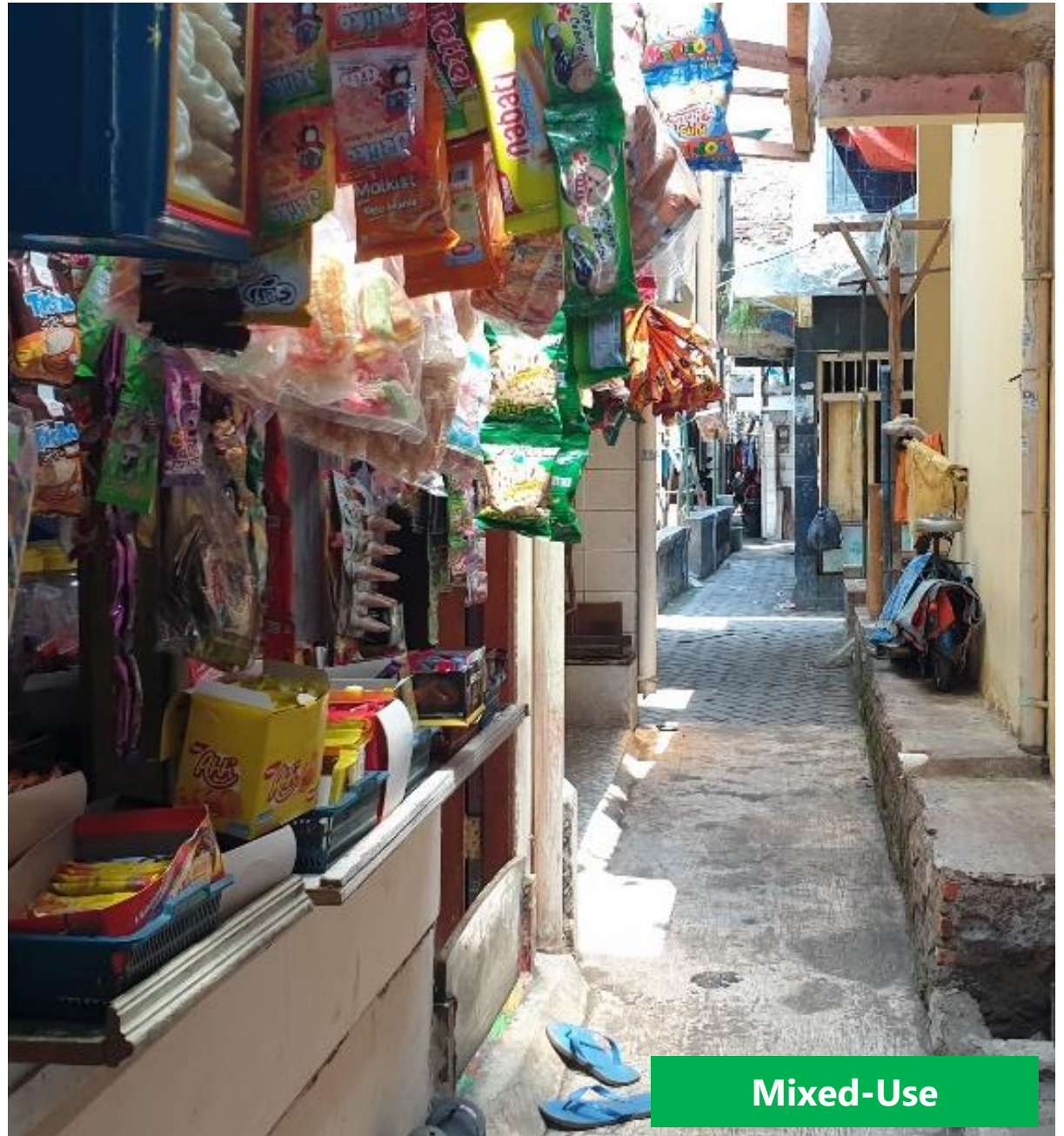




Compact & Dense



Near the Activities Center



Mixed-Use



Walking & Cycling are being main options to mobile



But, this is what kampung is always associated with

Kampung Kota Bersama

The Goals | Pilot Project



The Goals

1

Creating pedestrian & bike – friendly neighborhood

2

Increasing the sense of belonging for every improvements made

3

Doing capacity building & transfer knowledge to the people

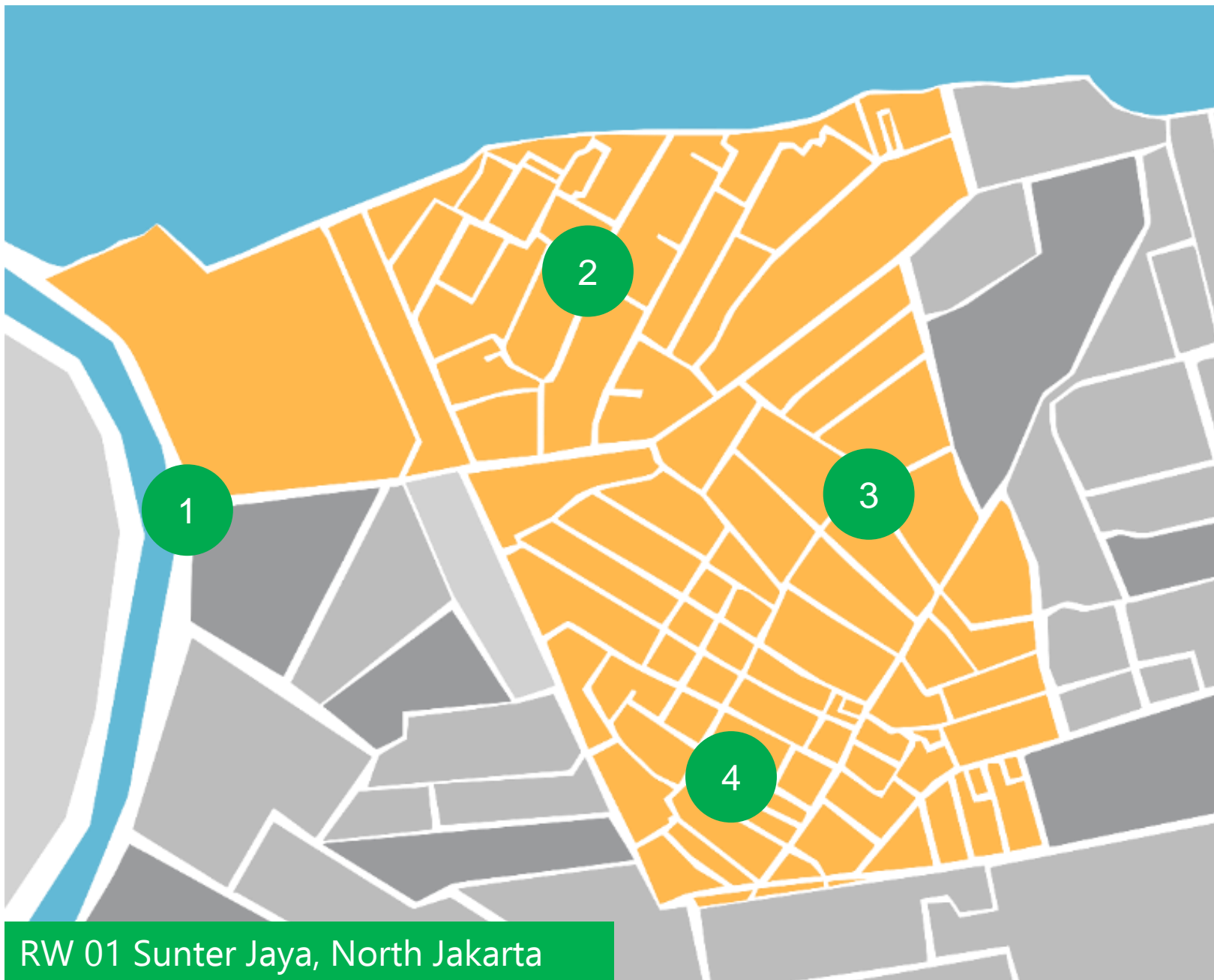
4

Established the collaborative environment

5

Emphasized the direct role of women & children within the process





RW 01 Sunter Jaya, North Jakarta

Pilot Project

1. Lack of reliable public transit
2. Lack of safe intersections
3. Lack of public spaces
4. Parking everywhere

15.6 Ha
24 subdistricts
3,000 households
13,000 inhabitants



1. Planning

Started in March 2018, the planning process was put the importance of women and children role within the process



2. Implementation

It was initiated with the process of making list of sources with the locals and finally do the field works



3. Festival Kampung

Local event to celebrate and appreciate the improvements made by the locals. Time to find collaborators



Child-friendly alley



before



base paint



marking



painting



after



Traffic & parking management alley

before



marking



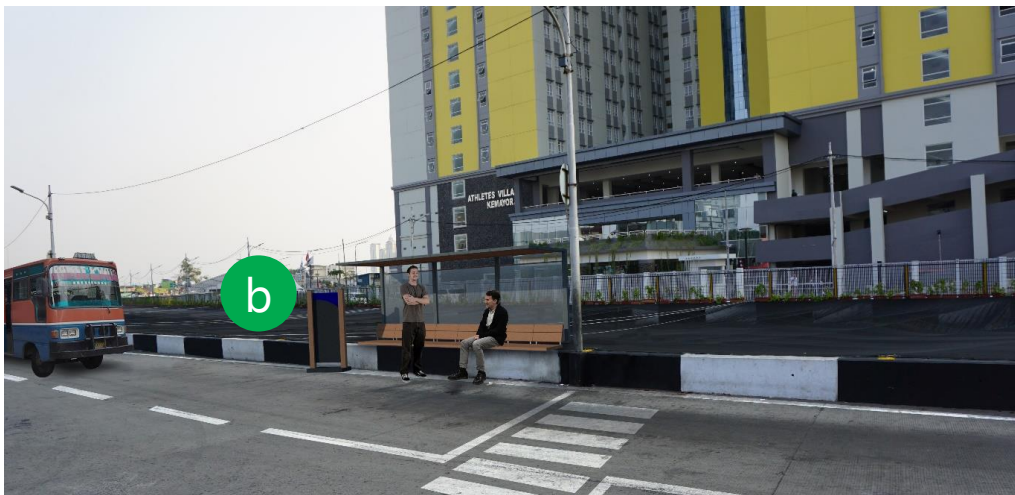
after

painting

To be improved in 2019

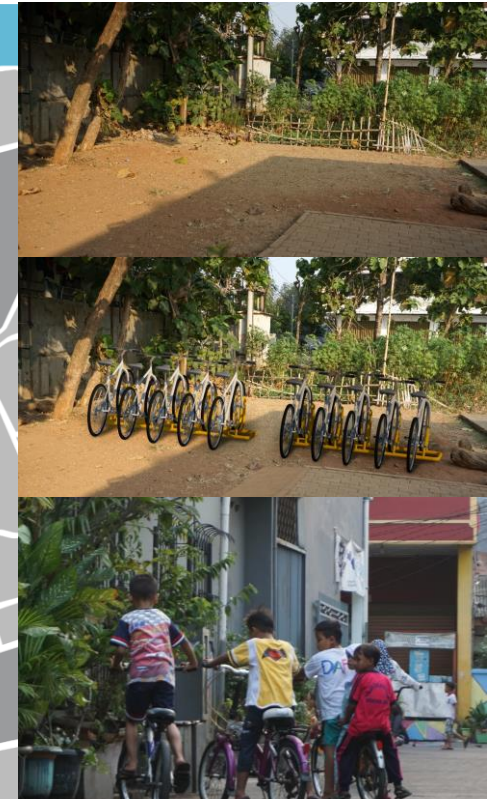


a. Additional sign for new bus stop/station



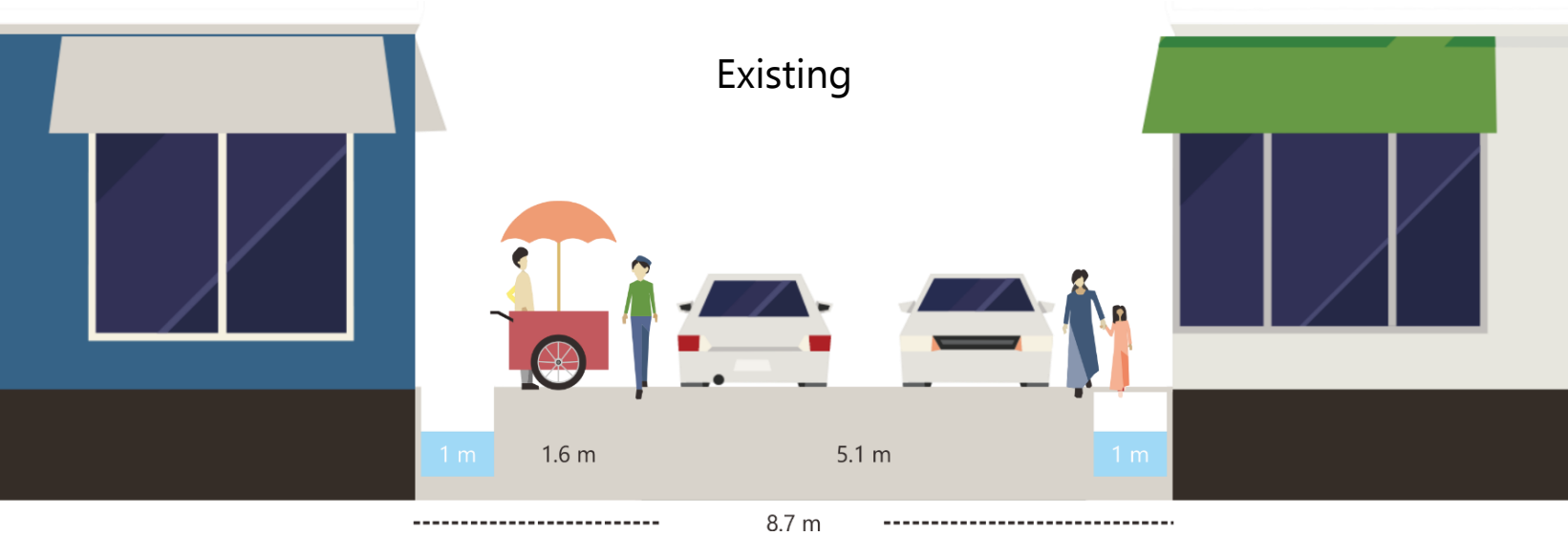
b. Additional BRT route, bus stop/station, and Zebracross

Waiting for Collaborations

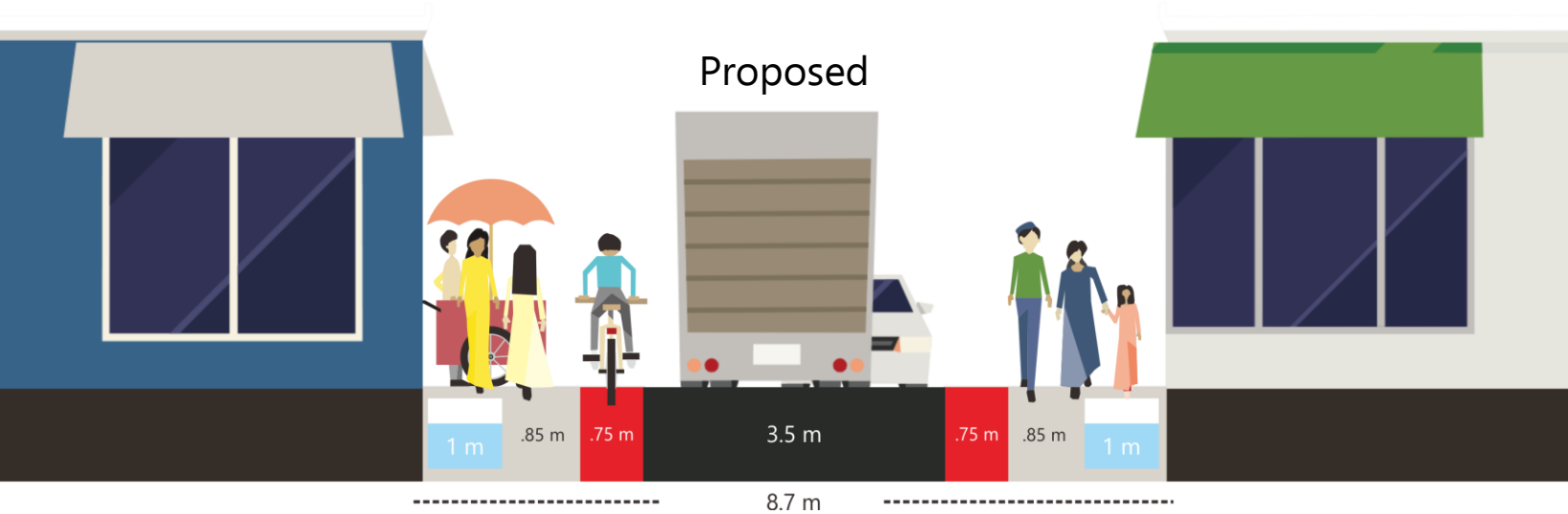


Bike sharing in Kampung (Sepeda untuk Kampung)

Waiting for Improvements



Street design & Lighting



Methods & Replication

The progress of scaling up the pilot project of Kampung Kota Bersama



2018



North Jakarta: 1 RW

Actors:
ITDP Indonesia, Locals, UN Women,
Environment Agency of Jakarta,

2019



North Jakarta: 31 RW
Central Jakarta: 45 RW
South Jakarta: 58 RW
East Jakarta: ... RW

Actors:
ITDP Indonesia, Locals, Governor of DKI Jakarta,
City Mayors in DKI Jakarta, Agencies and sub-
agencies in DKI Jakarta, Communities,
Academia, etc

Goal



Other 2700+ RW all over Jakarta

Actors:
Locals, Governor of DKI Jakarta, City Mayors in
DKI Jakarta, Agencies and sub-agencies in DKI
Jakarta, Communities, Academia, ITDP
Indonesia, etc

Steps & the Outputs

1. Meeting with city mayor

Output: Commitment of city mayors

2. List of locations

Output: List of locations which are proposed by the head of districts

3a. Preliminary survey

Output: Prior data and the commitment of locals

5. Implementation

Output: Physical improvement, policy implementation, and documentation

4. Planning Process

Output: Map of the neighbourhood, map of issues, concept & branding, and policy to action plans

3b. Team Preparations

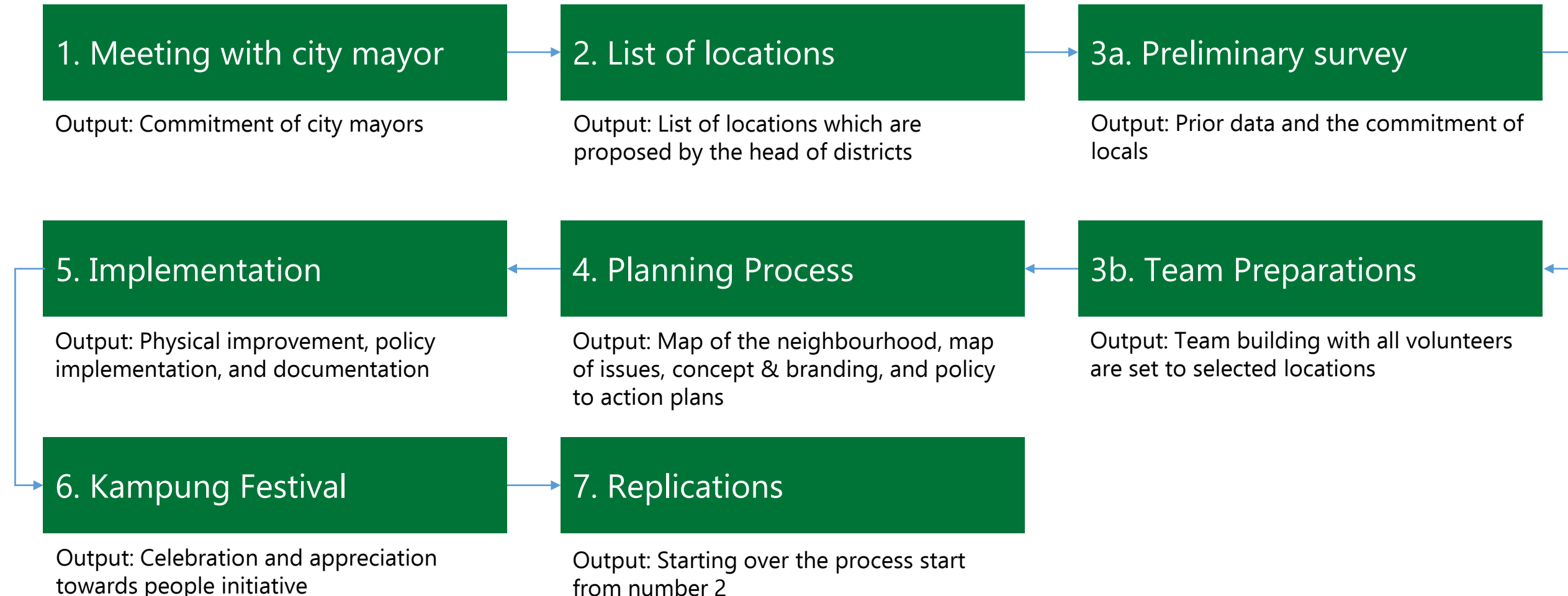
Output: Team building with all volunteers are set to selected locations

6. Kampung Festival

Output: Celebration and appreciation towards people initiative

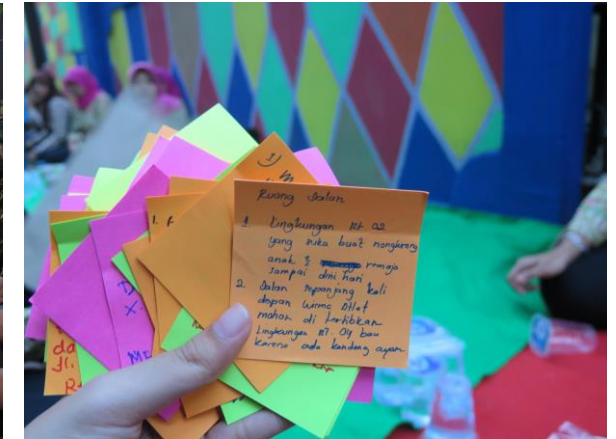
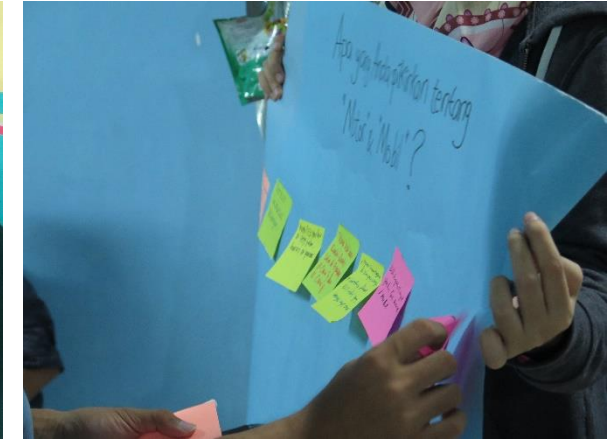
7. Replications

Output: Starting over the process start from number 2



Methods






Discussion







Target groups:
Women, Men, Teenagers

List of Questions

Basic template

-  What are issues that might be found within this neighbourhood?
-  What do you think & feel when you walk around this neighbourhood?
-  What do you think & feel when you use your bike around this neighbourhood?
-  What do you think & feel related to the existing service of public transit?
-  What do you think & feel related to the existence of motorcycles, cars, and trucks?

-  What are specific issues that might be found within these alleys?
-  Please mention the top 3 of your preference transport modes!
-  Please mention the daily activities of your family members!
-  Please mention your family member name who has daily activity outside the neighbourhood!

Methods

Interview



Target groups:
Elderly, disabilities, and
caregivers

List of Questions

Basic template

- a Please mention the name and how old you are!
- b What are routine activities that you have? It could be related to religious activities or others
- c How do you do your activities and how to reach out the activity places?
- d When you do your routine, do you find any difficulties? Please mention it!
- e Do you ever feel worry when you walk or ride the bike within this neighborhood?
- f Do you also use the existing public transportation?
- g If you do, could you please mention the reasons and some inputs related to the service?
- h If you don't, could you please mention the reasons?
- i Do you have special notes related to your specific needs to have safe access?
- j What do you expect from the improvements within this neighborhood?

Methods

Draw & Put the stickers



Target groups:
Children

List of Questions

Basic template

a

What will you choose to go to school?

b

What will you choose to play around or go to playground?

c

What will you choose to visit your friends?

d

What will you choose to travel with your family?
What will you choose when you go in holiday?

e

What transport mode is your favorite?

f

What transport mode do you hate the most?

a

What do you like from this neighborhood?

b

What don't you like from this neighborhood?

c

What is your favorite transport mode? Why do you like it?

d

What is your dream towards this neighborhood?

a

Please draw your dreamable neighborhood!

Methods

Travel Diary

No	Hari, tanggal	Orang yang Beraktivitas (Bapak, Ibu, Anak)	Waktu		Tujuan & Alamat	Alasan/Keperluan	Pilihan Transportasi
			Berangkat	Tiba di tujuan			
14	Minggu 6 Mei 2018	Ibu-ayu	04.00	04.20	kopasar	belanja	Sepeda
			05.00	05.20			Sepeda
15	Minggu 6 Mei 2018	Nadya	09.30	09.40	Kantor RW	belajar	Jalan
			10.20	10.30			Jalan
16	Minggu 6 Mei 2018	Laila	09.30	09.40	Kantor RW	belajar	Jalan
			10.20	10.30			Jalan
17	Senin 7 Mei 2018	Bapak Rendi	19.30	20.00	Kantor Jl. Sawo	bekerja	motor
			08.00	08.20			motor
18	Senin 7 Mei 2018	Ibu-ayu	04.00	04.20	kopasar	kopasar	Sepeda
			05.00	05.20			Sepeda

07.30	08.00	parar baru	1. Bekerja (satpam)	motor
09.00	09.30			motor
08.00	08.10	Jl. Sespahes. Sunter Jaya	2. bekerja (ART)	Jalan kaki
12.00	12.10			Jalan kaki
08.00	08.05	Jl. Telaga Ratna	3. baby sitter	Jalan kaki
17.00	17.05			Jalan kaki

No	Hari, tanggal	Orang yang Beraktivitas (Bapak, Ibu, Anak)	Waktu		Tujuan & Alamat	Alasan/Keperluan	Pilihan Transportasi
			Berangkat	Tiba di tujuan			
19	Senin 21 Mei 2018	Bapak Mustafaib Afandi	07.00	07.15	Padangrangan	Bekerja	Motor
			18.00	18.15			Motor
20	Senin 21 Mei 2018	Ibu Kholifah	08.00	08.10	Departemen Spring K/II	Bekerja	Sepeda
			13.00	13.10			Sepeda
21	Senin 21 Mei 2018	Anak Reza Aprilia	06.00	06.15	Sekolah SMPN 11 Jakarta	Sekolah	Motor
			15.00	15.45			Motor
22	Senin 21 Mei 2018	Anak Rendi Afandi	06.00	06.10	Sekolah SDN 03 Sunter Jaya	Sekolah	Motor
			12.00	12.15			Motor
23	Selasa 22 Mei 2018	Bapak Mustafaib A.	09.00	09.15	Padangrangan	Bekerja	Motor
			18.00	18.15			Motor

No	Hari, tanggal	Orang yang Beraktivitas (Bapak, Ibu, Anak)	Waktu		Tujuan & Alamat	Alasan/Keperluan	Pilihan Transportasi
			Berangkat	Tiba di tujuan			
	Rabu 16 Mei 2018	Bpk. Kodan	05.15	08.00	Komplet Pondok Indah	1. Bekerja	BIS
			07.30	10.30			BIS
		Sta. Widyani	06.30	06.50	Jl. Raya Mangga Besar	1. Bekerja	Motor
			13.00	13.30			Motor

Minimum 10 households/RT

Potential Collaborations

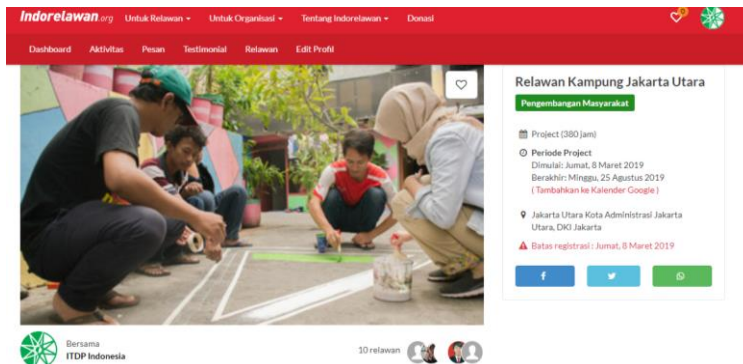
Being volunteers | Adopt the streets | Scaling up the projects



Potential Collaborations

Being Volunteers

“Relawan Kampung”



Let's be locals!

The volunteers will be deployed into several teams, several locations. You will act as technical assistant for the locals. You will have chance to visit kampung once or twice per week.

Registration via:
www.indorelawan.org
deliani.siregar@itdp.org

Adopt the Streets

“Adopsi Gang”



Let's make it happens!

Being a donor can be fun. You can donate and join the process of the making of sustainable and thematic alleys and/or streets. Put the names full of respect in many creative ways.

Further info:
deliani.siregar@itdp.org

Scaling Up the Projects

“Kemitraan Perluasan Program”



Let's collaborate & make friends!

We open to collaborate with anyone. If we haven't set the type of collaborations, let's discuss further more about the activities that we can do together.

Further info:
deliani.siregar@itdp.org
fani.rachmita@itdp.org



 www.itdp-indonesia.org

 [itdpindonesia](https://www.instagram.com/itdpindonesia)

 [ITDP indonesia](https://www.facebook.com/ITDPindonesia)

 [@itdpindonesia](https://twitter.com/itdpindonesia)

Anggi
deliani.siregar@itdp.org
Fani
fani.rachmita@itdp.org